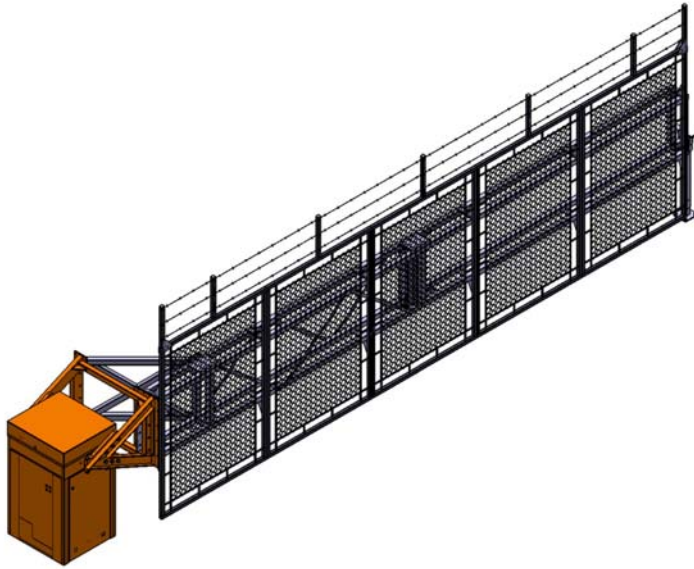


BLG77 BARRIER FENCE OPERATOR



BLG77 BARRIER FENCE OPERATOR

The BLG77 Barrier Fence Operator is designed and manufactured by Automatic Systems. The BLG77 is a unique barrier design that effectively prevents both vehicles and pedestrians from unauthorized access. The BLG77 is typically used for medium to low traffic volume and single lane access point management. The electro-magnetic tip support generates around 200 kg (441 Lbs) of holding force.

It is most often used for asset protection in facilities that utilize full perimeter barrier protection. The BLG77 is capable of using barrier arms up to 6.35m (20' 10") and can fully open in 7 to 10 seconds.

SAFETY

1. Completed Cycle Locking: Barrier arm mechanically locked in the fully completed 90° vertical up position, and in the completed horizontal down position.
2. HD Clutch: Torque limiter (Heavy-duty), which protects the electromechanical drive system.
3. Emergency Crank with safety circuit.
4. Power Failure: System will shut off and the gate should stay in its current position dependent on the adjustment of the clutch and the position of the gate at the time of power failure. It may continue to move slowly for a few seconds.

DESCRIPTION

1. Cabinet housing made of a strong welded steel frame up to 3/4" covered with 14 gauge (2mm) sheet metal.
2. Upper cover is 14 gauge (2mm) thick, folded, and welded sheets steel, security locked.
3. Keyed-lock safety access door.
4. Rigid fence made of an aluminum welded frame and modular panels. The panels are made of aluminum frames that hold the aluminium chain link mesh.
5. Barrier fence is attached to a rotating shaft mounted on twin ball bearings.
6. Barrier arm balancing achieved by means of integrated adjustable compression springs.
7. Electromechanical unit includes:
 - 3 phases instant-reversing 3/4 HP motor,
 - Speed reduction gearbox, with worm screw type mechanism.
 - Crankshaft/rod device with steel abutments.
 - Analog sensor combined with speed controller allowing a smooth movement of the barrier and progressive acceleration and deceleration.
 - Safety torque limiter with adjustable friction disks.
 - Transmission between motor and gearbox, by V-belt and pulleys.
8. Integrated heater for low temperatures.
9. Emergency crank with safety circuit breaker for manual operation of the barrier in the event of a power failure.
10. Tip support: Electromagnetically locking tip support.
11. AS1320 control board enabling various commands and/or accessory options
 - Possibility of 2 built in vehicle detectors (single or double allowing 4 detectors).
 - Overload protection
 - Terminal blocks for motor, detectors relays, and options.
 - Output dry contact for information on the barrier or to command other equipments.
 - Status of the barrier's position (open or closed),
 - Status of the presence detectors,
 - Command for master-slave barriers (movement of one barrier controlled by the other barrier),

*Specifications subject to change without prior notice
Specifications and dimensions on reverse side*

MODEL BLG77 BARRIER FENCE
OPERATOR

TECHNICAL DATA
ASA-EN BLG77
Rev. Jan. 17th 2008

 **automatic
systems**

ANTI-CORROSION PROTECTION AND PAINT WORK

Internal mechanical parts

Protected by electroplated zinc.

Cabinet housing

Housing finish is made of two layers. First one is a coat of a rich zinc epoxy primer. The second one is a coat of polyester powder coat with orange as the standard color. This protection ensures resistance to the most severe environmental conditions.

TECHNICAL CHARACTERISTICS:

- Barrier arm length: Two options available
 - o 5.08m (16' 8") length by 3m (10') height (without barb wire).
 - o 6.35m (20' 10") length by 1.8m (6') height (without barb wire).
- Opening time: 7 to 10 seconds.
- Electromechanically locking tip support. (See Tip Support data sheet).
- Motor: 3/4 HP Three phase.
- Power supply: 240V AC single phase for the main supply and 120V for the maintenance receptacle (supplied by the customer).
- Frequency: 60 Hz.
- The operator and fence, even if opened, will resist to wind of 120km/h (75 mi/h) with normal maintenance.
- Heavy-duty HD Clutch.
- Strip heater to warm the gearbox.
- Gearbox type: reduction ratio: 100:1.
- Net weight: 640 Kg (1400 Lbs) with barrier fence.
- Operation temperatures: -35°C to +70°C (-13°F to +158°F).
- Mechanical endurance (MCBF) with recommended preventive maintenance (details in BLG77 manual):
 - 750 000 cycles at a rate of 100 complete cycles/hrs max with a maximum of 1000 complete cycles per day.

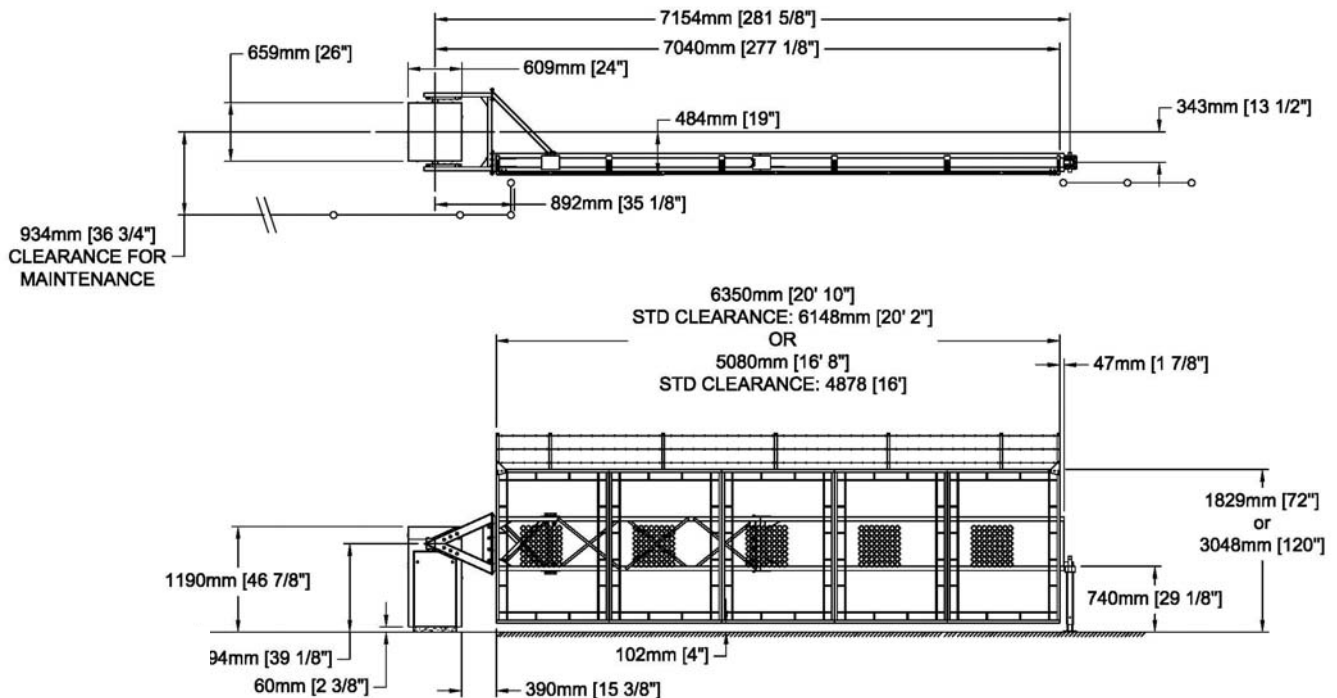
OPTIONS

- Fence with impact detection. (Mounted on lead bottom edge of fence).
- Barrier fence lighting. (Available depending of length).
- Barrier fence signage. (Please consult your representative).
- Key switch to open the gate
- Remote control
- Traffic lights installed on post
- Additional heater for extreme cold.

Note: Adding optional attachments to the Barrier fence increases weight, therefore decreasing the MCBF and can cause damages.

CONTROLLER OPTIONS

- Operated via push button box (open-stop-close), or automatic closing with a loop detector.
- Actuation devices, such as push buttons, card readers, vehicle presence detectors + detection loops, etc., for opening or closing of gate.
- Controller and detector allow many settings of the detecting loops like:
 - Arming,
 - Reset, safety closing
 - Free vend, automatic opening.



MODEL BLG77 BARRIER FENCE
OPERATOR

TECHNICAL DATA
ASA-EN BLG77
Rev. Jan. 17th 2008

automatic
systems